

## Does your child ...

### ... at 3 months

*babble, follow a moving object with his or her eyes, hold his or her head erect, grasp an object placed in his or her hand?*

### ... at 6 months

*turn over from back to stomach, turn toward sounds, sit with little support, reach for and hold objects?*

### ... at 9 months

*say "Ma-ma" or "Da-da," respond to his or her name, stand for a short time holding onto support, bang two objects together, initiate sounds?*

### ... at 12 months

*wave bye-bye, say two words besides "Ma-ma" and "Da-da," feed himself or herself?*

### ... at 18 months

*say six words, build a tower with three blocks, try to put on shoes, drink from a cup held in both hands?*

### ... at 2 years

*use two-word sentences, say at least 50 words, walk up and down stairs, run, point to objects in a book?*

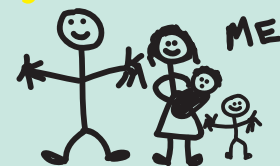
*If you feel your child age birth to 3 years is not learning or growing in the way you expect, call*

## Early Intervention

**CHILD FIND**  
**1-800-543-3098**



*En Español:*  
**1-866-450-2838**



For children ages 3 to 21,  
call 334-242-8114  
or your local school system.



Alabama Department of  
**REHABILITATION SERVICES**  
Alabama's Early Intervention System  
602 S. Lawrence St. • Montgomery, AL 36104  
334-293-7500 • 1-800-441-7607 • [www.rehab.alabama.gov/ei](http://www.rehab.alabama.gov/ei)

